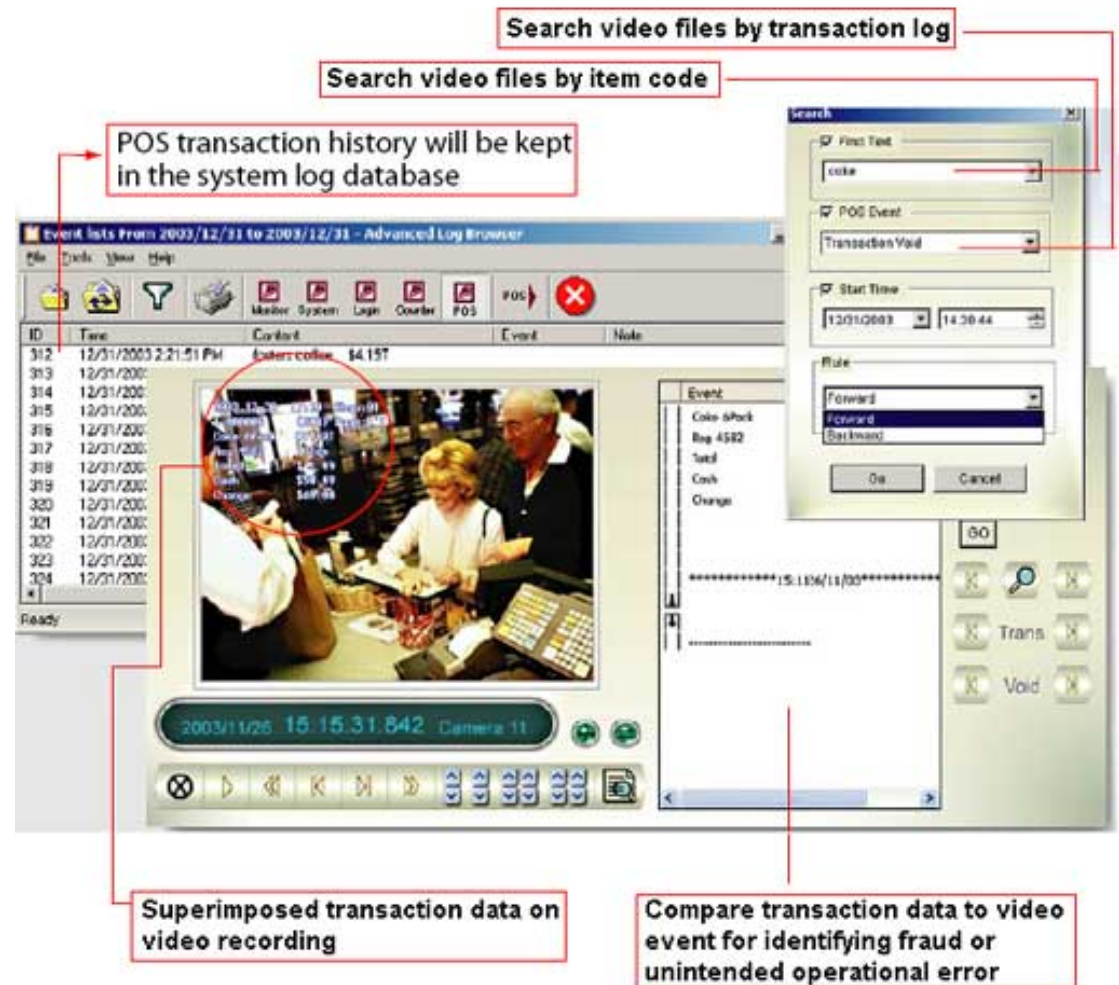


STONE® POS Text Inserter

Model: SE/TX001

Text Inserter for POS, which is developed and produced by our company for POS system, is a video text insert device designed to display POS information. The product is aimed to superimpose the text information of merchandise, which text information is displayed on the pole display or output to printer, on the real-time surveillance video output for the purpose of a synchronized display of surveillance video together with POS information. Such display can also be recorded by means of video transmission and recording device. After interfacing the Text Inserter with a POS, management personnel can oversee the transaction details of the POS by the surveillance video which can help the manager personnel to recognize and correct the POS transaction details and make up shortfalls of the process. It is also helpful to efficiently prevent the loss on physical inventory and embezzlement, as well as to provide accurate video and transaction details in relation to disputes between shopping markets and customers. The product can greatly enhance the usefulness of the existing video surveillance system of shopping markets and bring convenience and accuracy to the management.

Text Inserter for POS has one channel for video signal input and one channel for video signal output. Each device can interface with only one POS machine. The device alone can set up the position of the POS information and its display mode, which POS information is superimposed on the video output. The overlay information can be collected through the output port of POS's pole display or through a printer output port. All the parameters can be configured through a bilingual (Chinese and English) menu which is quite convenient.



STONE[®] POS Text Inserter

POS Text Inserter

Before Adding Text Inserter to Security Video

After Adding Text Inserter to Security Video



Camera



POS Machine

Text Inserter



DVR

Technical parameters

Video input amplitude	1VP-P(75 Ω), 1 Channel
Video output amplitude	1VP-P(75 Ω)
Bandwidth	12MHZ
Overlay text content	GB2312 full Chinese font
Text display mode	With or without background frame
Characters each line	Maximum 32 Chinese characters with 16x16 matrix, or 64 half-width characters
Information lines	8 lines
Information display positions	Top, middle or bottom
Power Supply	DV12V 0.5A
Temperature of working environment	-10 $^{\circ}$ C~+40 $^{\circ}$ C
Relative humidity of working environment	\leq 95% (no condensation)
Dimensions	176(W)x 30(H) x 104(D)mm

The main function

1. The device has an LPT port and an RS232 port, either of which is available for connecting POS.
2. The device can scroll display 8 lines of POS information. Each line can display 32 Chinese characters or 64 ASCII characters at the most.
3. The starting column and the maximum characters for each line can be adjusted in accordance with the factual POS information.
4. The device can display the POS information with or without background frame, which makes the POS information easy to watch.
5. The display time of the POS information on the monitor can be adjusted pending on the situation.

STONE[®] POS Text Inserter

Interfaces and communications

Function	Interface	Hook-up
Input	RS-232 Input	Attach serial port of POS or output port of pole display
	LPT Input	Attach LPT output of POS
	Video Input	Attach camera video input source
Output	RS-232 Output	Attach to the input of POS's pole display
	LPT Output	Attach to the LPT input of POS
	Video Output	Attach to video distributor, DVR and etc.
	Hook-up	Rate
Communications	POS serial port or pole display port attaching to RS-232	1,200 bps~9600 bps
	RS-232 output port attaching to input port of POS's pole display	1,200 bps~9600 bps

Hardware connection diagram

(You do not need to install any software on the hardware will be work)

Parameter setting:

3. Major Parameters

Technical specifications

Video In (BNC)	1VP-P Terminated 75Ω, +/-20%
Video Out (BNC)	1VP-P(75Ω) Terminated or Unterminated
Bandwidth	12MHZ
Overlay text content	Unicode font
Characters each line	Maximum 64 half-width characters
Information lines	8 lines
Power Supply	DV12V 0.5A
Temprature of working	-10℃~+40℃
Demensions	176(W)x 30(H) x 104(D)mm

Interfaces and communications

Function	Interface	Hookup
Input	RS-232 Input	Attach serial port of POS or output port of pole display
	LPT Input	Attach LPT output of POS
	Video Input	Attach camera video input source
Output	RS-232 Output	Attach to the input of POS's pole display
	LPT Output	Attach to the LPT input of POS
	Video Output	Attach to video distributor, DVR and etc.
	Hookup	Rate
Link	POS serial port or pole display port attaching to RS-232	1,200 bps~9600 bps
	RS-232 output port attaching to input port of POS's pole display	1,200 bps~9600 bps

4. Linking to Other Device

