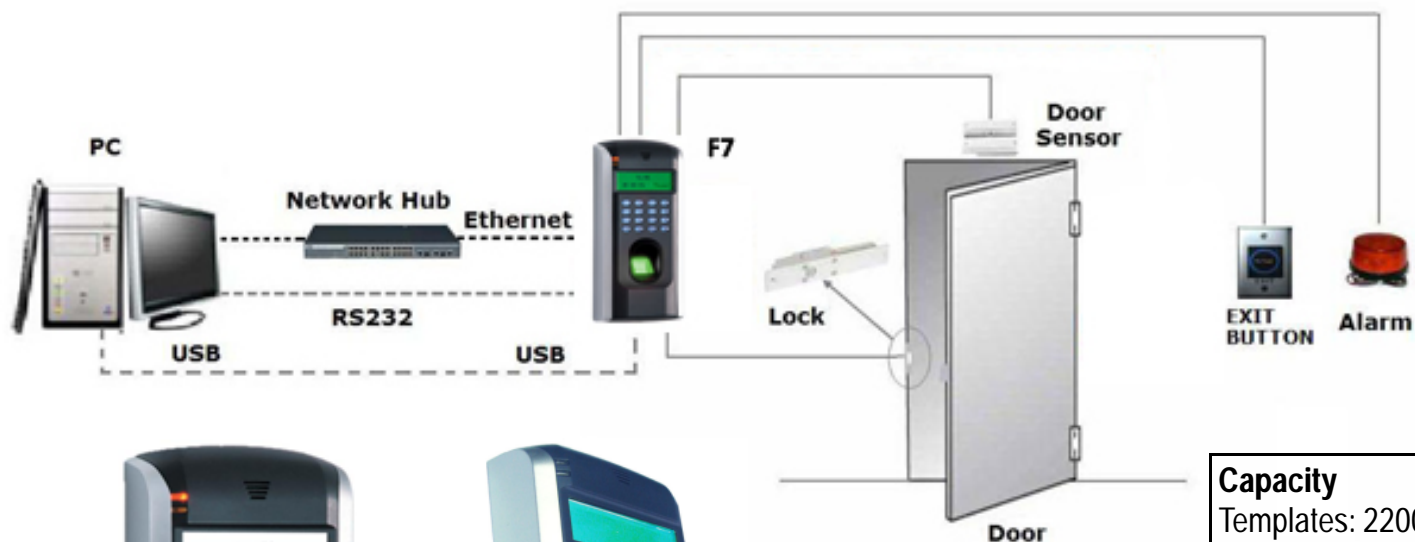


# STONE® F7 / GA1000 Fingerprint Access Control Reader



F7 is a widely used Access Control in the office. Choosing a lot of stable original parts, strictly follow the national security product standard .F7 is suitable for the entrances and exits of office, factory, hotel, school, etc. All input /output are using anti-jamming protection and over-voltage/circuit protection. The product experiences the strict degradation test before leaving factory, the greatest advantage of F7 is easy to install, with multifunctional & elegant design and reasonable price.

<b>Capacity</b> Templates: 2200 Transactions: 50000	<b>Verification/Identification</b> Matching: 1:N up to 2200 templates Verification: <= 1 second Identification: <= 2 seconds FRR: <= 1% FAR: <= 0.001%
<b>Display</b> LCD: 2 x 16 inch Character backlit LCD Display	<b>Environment</b> Oper. Temp: 32°-105°F (0°-42°C)
<b>Communication</b> Port: RS 232/RS 485 Port: Ethernet 10/100 Port: 26 bit Wiegand Output	<b>Power</b> Oper. Voltage: 12V, DC Idle Current: 60 mA Oper. Current:: 450 mA Relay Output: 12V DC, 3A
<b>Dimensions</b> Length: 7.3 inches / 185mm Width: 3.3 inches / 85mm Depth: 1.45 inches / 37mm	<b>Part Numbers</b> F7: Standalone Biometric Access Control Terminal